

# ED OFFICE & TECH FEE BREAKDOWN

**Hardware** – includes all the computer systems and additional equipment provided to the schools including:

- Computers
- Laptops
- Tablets
- iPads
- Servers
- Computer parts
- Keyboards & mice
- SMART Boards
- UPSs
- Projectors
- Apple TVs
- Document Cameras
- Printers
- Scanners
- ...and more



**Personnel** – allows the support of the technology in our schools including:

- Salaries
- Benefits
- Membership dues
- Postage/shipping fees
- Travel to schools
- Training Teachers
- Professional development
- Conferences
- Tech support
- ...and more

28%



**Software** – includes licensing for all the various products used by students and teachers such as:

- Windows
- Office 365
- PowerSchool
- Canvas
- TypingClub
- Learn360
- iPad apps
- ...and more

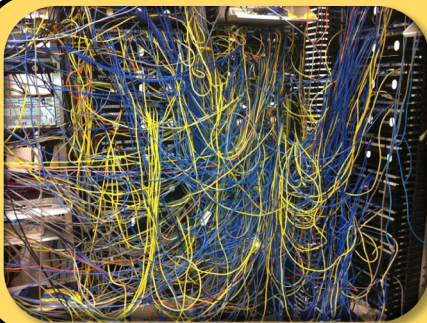
14%



**Network** – includes all that is needed to connect the technology to the rest of the school network and the outside world

- Wireless Access Points
- Cabling
- Fileservers
- Data center
- Network switches
- ...and more
- Server racks

8%



**Diocesan Education Office** – includes the district level support for all of our schools

- Curriculum & Instruction
- Seminarian and Priest Certification
- State Accreditation
- Student Health & Safety Requirements
- Monitor Teacher and Admin Certification
- Maintain Electronic Records, Files, & Statistics
- Legal Consultation
- Special Education Consultation & Compliance
- Provide Processes for Supervision, Evaluation, & Professional Development
- Legislative Initiatives & Updates
- Diocesan Education Policies
- Safe Environment
- ...and more

20%

